



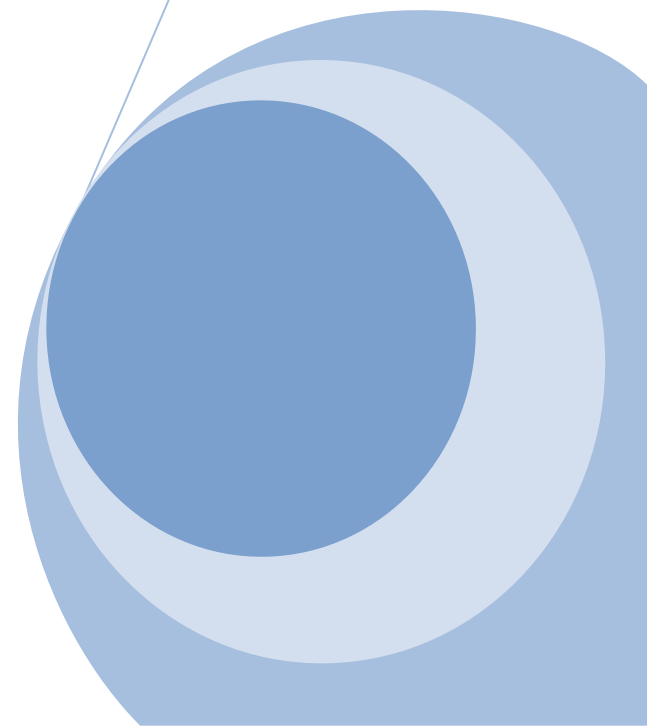
**immediate®**



## Technical Requirements and Computer Setup

This document reviews hardware and software requirements and any configuration necessary on an Immediate Online user's computer.

**Media Marketing, Inc**



## Computer Setup

### Hardware

Hardware capable of running a supported browser  
1024x768 or larger display  
Internet/Intranet connection

### Software

The software requirements will change depending on the modules being used. See the grid below to determine what requirements are needed based on the modules being used.

Module	Requirements
Application	Internet Browser / Operating System
SlideManager	S
Presentation Builder	S
Media Budget	None
Media Analyst	None
Media Schedule	P, E, X, PR
Media Map	M, X

E	Requires Microsoft Excel (2000-2007)	Install once per user
M	Requires Microsoft MapPoint (2006-2010)	Install once per user
P	Requires Microsoft PowerPoint (2000-2007)	Install once per user
PR	Requires Protoview Controls	Install once per user
S	Requires Microsoft Silverlight Control	Update <b>may</b> be required each release
X	Requires an ActiveX control	Update <b>may</b> be required each release

### Internet Browser / Operating System

Certain functions of the Immediate Online application require ActiveX controls. See the grid in the section above to determine which controls are needed. If ActiveX controls are needed one of the following **must be used**: IE6, IE7, IE8, or Firefox with the IE tab add-in browser and Windows 2000 – Windows7 operating system. If no ActiveX controls are needed any browser or operating system supported by Silverlight can be used. Choose *System Requirements* from <http://www.microsoft.com/silverlight/downloads.aspx> for a list of supported software.

### Client Software Controls

If controls are needed and not installed prior to visiting the page/launching a module the user will receive a notification prompting them to install the control. The Silverlight and ActiveX controls act as programs, so permissions need to be allowed accordingly to install them. The security on their computer may prevent the users from installing the controls.

## Client Software Controls Alternative - MSI Installer

The ActiveX controls can be loaded via an .msi installer available at <http://www.immediate.com/dependencies>. Contact support for the correct version of controls to load. The controls delivered in this .msi package are the same controls delivered automatically by the web application; this is simply an alternative way to deliver them. IT departments can use these packages to automatically update client computers without any user interaction.

## Silverlight Installation:

Silverlight can be installed by:

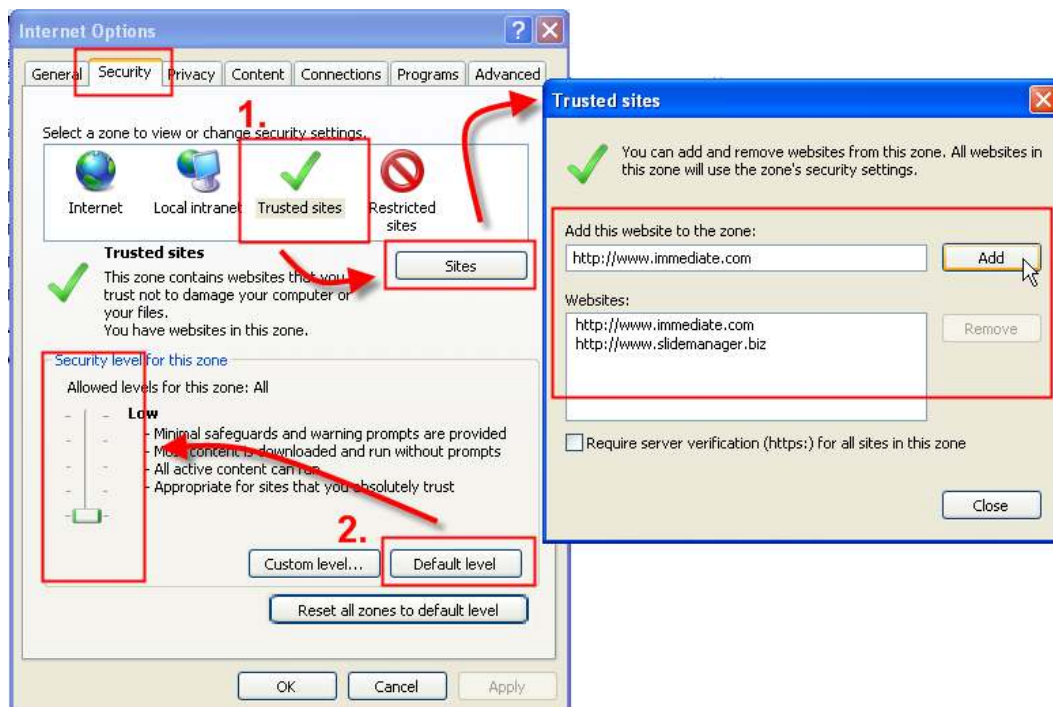
1. Choosing the prompt from the application
2. Manually going to Microsoft's site (<http://www.microsoft.com/silverlight/downloads.aspx>)
3. Deploying the control (<http://silverlight.net/learn/whitepapers>)

## IE / Browser Settings

### Trusted Sites / Pop up blocker exception

To avoid potential issues, enter the website address into the Trusted Sites list in Internet Explorer. If not using Internet Explorer configure the browser to allow pop-ups for the application's URL.

1. Tools → Internet Options → Security → Trusted Sites → Sites → enter the web site and choose 'Add'. (You may need to uncheck 'Require server verification. . .')
2. On the Security Tab choose Default Level, and then slide the bar to the left to Low.



## Temporary Internet Files Setting

To avoid possible refresh issues, have IE check for newer versions of stored pages on every visit:

Tools → Internet Options → General → Temporary Internet Files or Browsing history → Settings → Check for newer versions of stored pages → select **Every time I visit the webpage**

