

immediate[®]

**Media
Marketing
Inc.**

SlideManager[®]

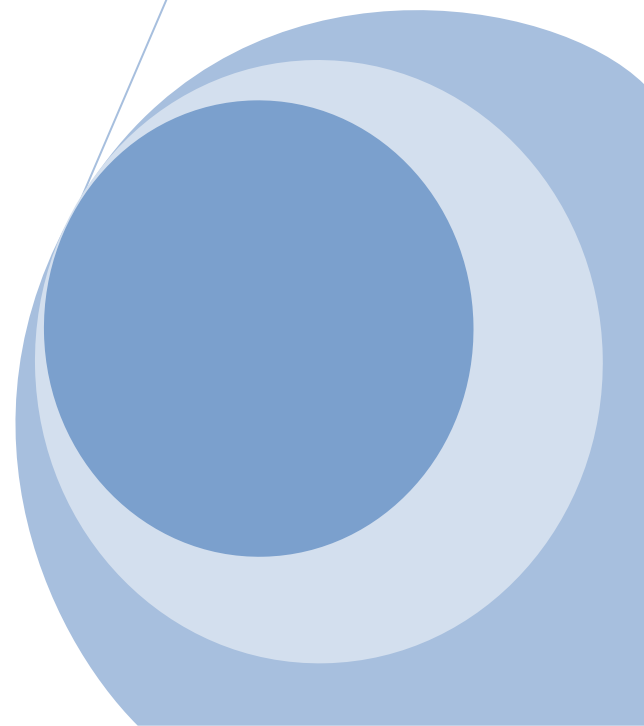


Branding and Customization

Immediate Online 3.1 and SlideManager 3.1

This document explores the various branding and customization options available in the Immediate/SlideManager application.

Media Marketing, Inc
1/4/2010





Contents

Branding	3
Login.aspx	3
PresentationBuilder.aspx.....	4
Customization	5
Login.aspx	5
Application Customization - Help/Feedback.....	5
SlideManager – Settings – Customization	6

Branding

To update the branding images, please contact your success manager at <http://www.immediate.com/support>.

Login.aspx



Immediate Online Presentation Management System



User Name:

Password: [Password Help?](#)

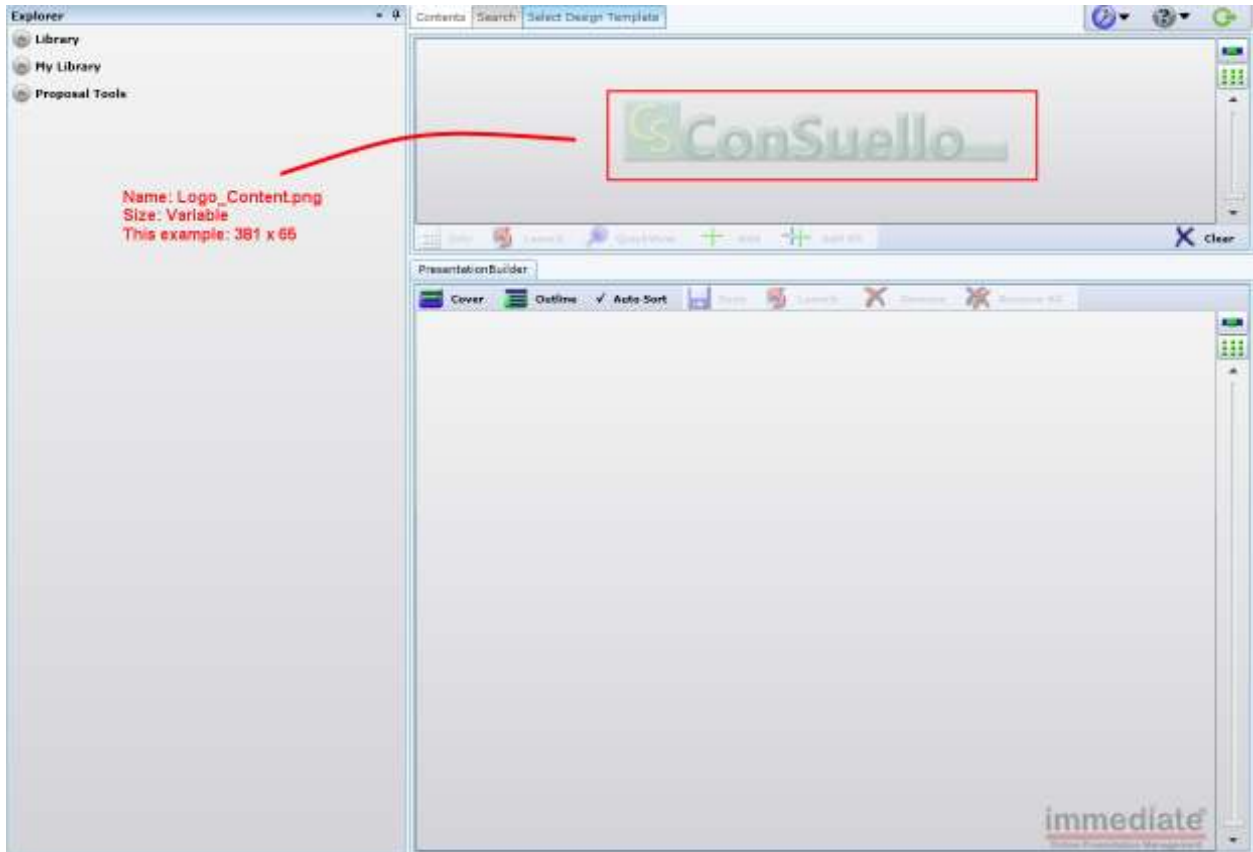
[New User?](#)

Name: login-center.png
Size: Variable
This example: 381 x 65

Media Marketing, Inc.

[Contact Support](#)

PresentationBuilder.aspx



Customization

Login.aspx



Immediate Online Presentation Management System

Banner Label



User Name:

Password: Password Help?

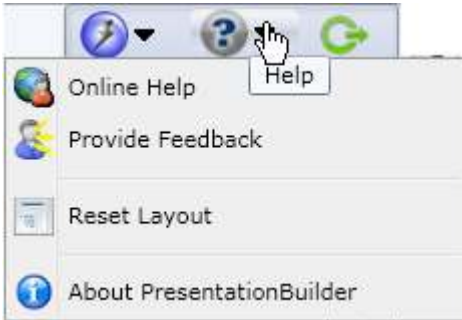
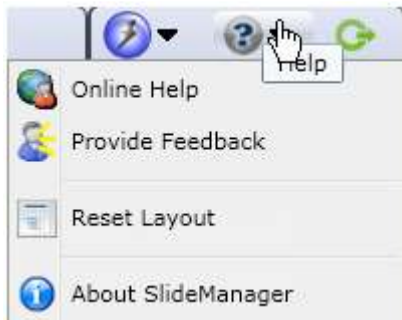
[New User?](#)

Link 1 Label / Link 1 Target

Media Marketing, Inc.
Contact Support

Link 2 Label / Link 2 Target

Application Customization - Help/Feedback



Interface	Customization Setting
Online Help	SlideManager Help Link or PresentationBuilder Help Link

SlideManager – Settings – Customization

Application customization options can be modified from the SlideManager – Settings tab – Customization area. In order for a user to access this area they must have the Application Administrator permission.

Settings

Builder Options

Customization

Banner Label: Immediate Online Presentation Management System

Link 1 Label: Media Marketing, Inc.

Link 1 Target: <http://www.immediate.com>

Link 2 Label: Contact Support

Link 2 Target: [mailto:help@immediate.com?subject=Support Reque](mailto:help@immediate.com?subject=Support%20Request)

SlideManager Help Link: <http://www.immediate.com/smOnlineHelp>

PresentationBuilder Help Link: <http://www.immediate.com/pbOnlineHelp>

Feedback Link: http://www.immediate.com/immediate_support.html

Remote Services

Security

Email

Default Import Options

Archive Management

Editor

Settings